



GMT MONTHLY MEMBERSHIP PROGRESS REPORT

Results as of: 1/31/2020

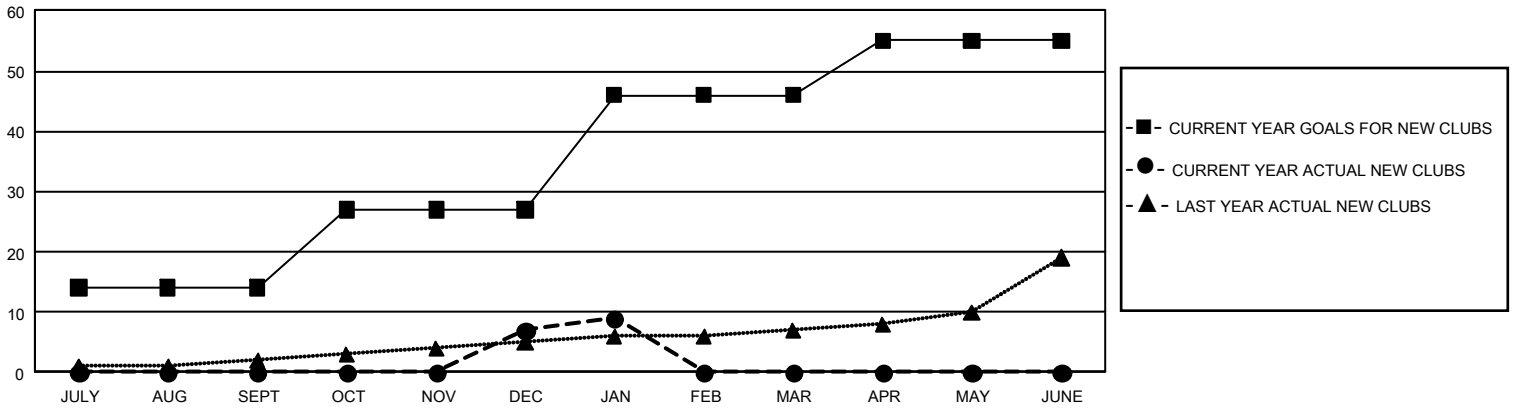
GMT Constitutional Area 1, Group B

GMT: OPEN

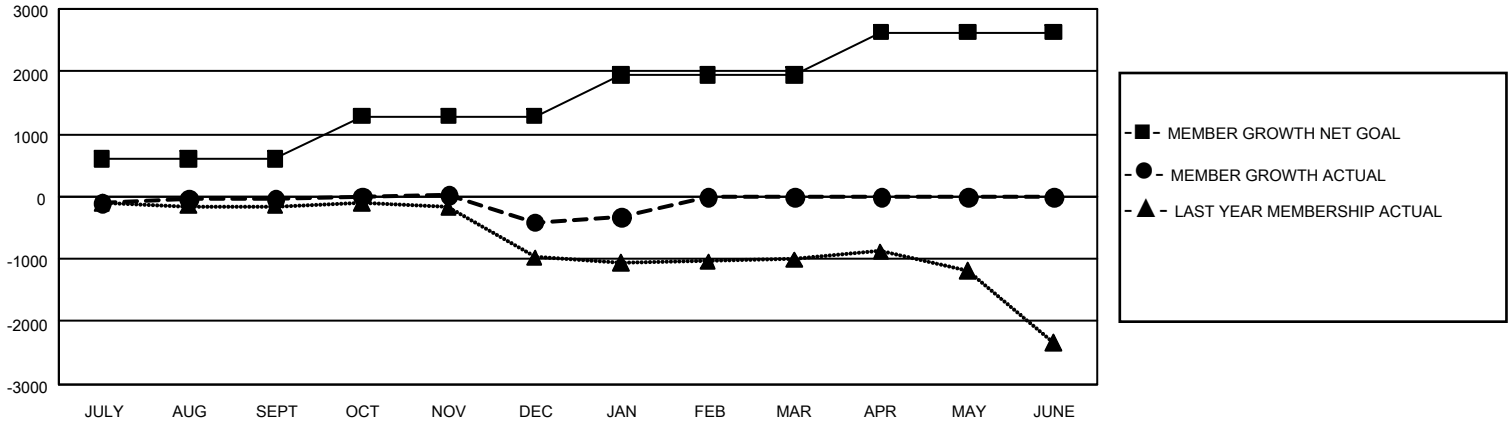
REPORT DOES NOT INCLUDE CLUBS IN UNDISTRICTED AREAS.

Clubs				Members			
RESULTS FOR 2019-2020				RESULTS FOR 2019-2020			
QUARTER	NEW CLUB GOAL	NEW CLUBS	DROPPED CLUBS	QUARTER	MEMBER GROWTH NET GOAL	MEMBER GROWTH ACTUAL	DROPPED MEMBERS ACTUAL (including transfers)
JULY/AUG/SEPT	42	0	25	JULY/AUG/SEPT	1,821	1,205	1,074
OCT/NOV/DEC	39	7	15	OCT/NOV/DEC	2,025	1,128	1,391
JAN/FEB/MAR	57	2	1	JAN/FEB/MAR	1,989	558	428
APR/MAY/JUNE	27	0	0	APR/MAY/JUNE	2,046	0	0

GOALS AND ACTUAL NEW CLUBS CUMULATIVE



GOALS AND ACTUAL MEMBERS CUMULATIVE



DROPPED CLUBS: 41	678 CLUBS OF 1,317 ADDED 1 OR MORE NEW MEMBERS	GENDER DISTRIBUTION
DROPPED MEMBERS	CLICK HERE FOR CUMULATIVE MEMBERSHIP DATA	MALE 20,503 (61.10%)
DECEASED 250		FEMALE 13,055 (38.90%)
CLUB CANCELLED 277		TOTAL FAMILY UNIT MEMBERS 6,467
OTHER 2,365		FAMILY MEMBERS PAYING HALF DUES 3,363
TOTAL 2,892		